

# Quality assessment of irrigation water related to soil salinization in Tierra Nueva, San Luis Potosí, Mexico

Zayre Ivonne González-Acevedo<sup>1,\*</sup>, Diego A. Padilla-Reyes<sup>2</sup>, and José Alfredo Ramos-Leal<sup>3</sup>

<sup>1</sup> Centro de Investigación Científica y de Educación Superior de Ensenada (CICESE), División de Ciencias de la Tierra, Departamento de Geología, Carretera Ensenada-Tijuana No. 3918, Zona Playitas, C.P. 22860, Ensenada, Baja California, Mexico.

<sup>2</sup> Posgrado en Ciencias de la Tierra con Orientación en Geociencias Ambientales, CICESE, Carretera Ensenada-Tijuana No. 3918, Zona Playitas, C.P. 22860, Ensenada, Baja California, Mexico.

<sup>3</sup> Instituto Potosino de Investigación Científica y Tecnológica, A.C. (IPICYT), C. Presa San José # 2055, Lomas 4ª. Sección, C.P. 78216, San Luis Potosí, S.L.P., Mexico.

\* zgonzale@cicese.mx

## ABSTRACT

Soil salinization is a complex process resulting from the interaction of several factors, mainly quality of water used for irrigation, which deteriorates by aquifer overexploitation, and changes in rainfall patterns and aquifer recharge related to climate change. The purpose of this paper is to present a method to assess the variations of groundwater quality, to compare its suitability for irrigation and to decipher the possible causes of soil salinity in Tierra Nueva, San Luis Potosí, Mexico. To assess salinization related to irrigation water quality, dissolved anions and cations were measured in surface and groundwater samples; the most widely used water quality indices to evaluate potential salinity risk of soils are Residual Sodium Carbonate (RSC) and Sodium Adsorption Ratio (SAR). In view of the limited number and uncertainty of using only two indices, in the present work a novel water quality assessment was applied for the first time by statistically combining eight individual quality indices: (RSC), (SAR), percentage of sodium (%Na), Kelley ratio (KR), permeability index (PI), soluble sodium percentage (SSP), magnesium adsorption ratio (MAR) and cation ratio of structural stability (CROSS). A factorial variance analysis and principal component analysis of these eight indices were performed to identify linearity and maximum variance. All irrigation water tests show dissolved ions that can easily precipitate as indicated by PI. In cropland, %Na, SSP, RSC, KR and PI had values unsuitable for irrigation, while RAS, CROSS and MAR values are within suitable levels. The main mechanism of soil salinization seems to be the cation exchange of  $\text{Ca}^{2+}$  to  $\text{Na}^+$  in the waters, along with the precipitation of natrite ( $\text{Na}_2\text{CO}_3$ ) promoted by shallow groundwater and semi-desert conditions of the region. The population growth in the region has caused further demand of clean water for human consumption, affecting the water availability from the aquifer of the study zone, worsened by drought associated to climate change.

Key words: water management; agriculture; irrigation; soil salinization; semi-arid region; Tierra Nueva; San Luis Potosí, Mexico.

## RESUMEN

La salinización de los suelos agrícolas es un proceso complejo y el resultado de las interacciones de varios factores, principalmente la calidad del agua utilizada para riego, la cual se deteriora por factores como la sobreexplotación de los acuíferos y las modificaciones en la precipitación y la recarga debido al cambio climático. El propósito de esta investigación es presentar un método de evaluación que resalte las variaciones de la calidad del agua subterránea, para comparar su idoneidad para el riego y descifrar las posibles causas de la salinización del suelo en Tierra Nueva, San Luis Potosí, México.

Para evaluar la salinización a partir de la calidad de agua de riego, se midieron los aniones y cationes disueltos en aguas superficiales y subterráneas. Los índices de calidad de agua más utilizados para evaluar el riesgo de salinización de suelos son el carbonato de sodio residual (CSR) y la relación de adsorción de sodio (RAS). Viendo el número limitado de índices y la incertidumbre que representa el uso de solo éstos dos, en el presente trabajo una nueva forma de evaluar la calidad del agua se presenta por primera vez, combinándola con un análisis estadístico de ocho índices individuales de calidad de agua: CSR, RAS, porcentaje de sodio (% de Na), la relación de Kelley (KR), el índice de permeabilidad (PI), el porcentaje de sodio soluble (PSS), relación de adsorción de magnesio (RAM) y la relación de cationes de la estabilidad estructural (CROSS).

Se realizó un análisis de varianza factorial y el análisis de componentes principales de los ocho índices para identificar la linealidad y la varianza máxima. Todas las muestras de agua de riego contienen iones disueltos que pueden precipitar fácilmente como indica el PI. En las zonas de cultivo, los índices que revelaron que el agua no es adecuada para su uso en el riego fueron: % Na, PSS, CSR, KR y PI. El principal mecanismo de salinización del suelo parece ser el intercambio catiónico entre  $\text{Ca}^{2+}$  y  $\text{Na}^+$  en las aguas, junto con la presencia de aguas subterráneas poco profundas y condiciones semidesérticas de la región que promueven la precipitación del mineral natrita ( $\text{Na}_2\text{CO}_3$ ). En la región, la población

va en aumento, lo que ha ocasionado una mayor demanda de agua limpia para el consumo humano, repercutiendo directamente en la disponibilidad de agua del acuífero de la zona de estudio, lo cual se ha agravado por la sequía asociada al cambio climático.

**Palabras clave:** gestión del agua; agricultura; irrigación; salinización de suelo; región semiárida, Tierra Nueva, San Luis Potosí, México.

## INTRODUCTION

Salinization of soils is one of the problems that often disturb agriculture worldwide. It is estimated “that the global annual cost of salt-induced land degradation in irrigated areas could be US\$ 27.3 billion, because of lost crop production” (Qadir et al., 2014).

A saline soil is defined as one that contains enough soluble salts to harmfully disturb the growth of agricultural crops. Worldwide, nearly 10% of the total land surface (over one billion ha) contains salt affected soils, no continent is free of such soils and it has been estimated that nearly 10 million ha of arable land are lost by salinization every year (Shahid et al., 2013). In arid and semiarid regions, salinization of soils is a common characteristic, although it can also occur in more temperate environments. It could represent a problem due to its negative impact on crop yields (Thomas and Middleton, 1993).

Montanarella et al. (2016), recently published the World’s Soil Resources Report, with contributions from 200 soil scientists from 60 countries. They appoint that the primary global drivers of soil change are population and economic growth, related to increase in consumption of resources and waste generation. The third primary driver is climate change through its current and anticipated effects on land use and management. For Mexico, the first main threat is erosion, the second is organic carbon change and the third is salinization and sodification.

In Mexico, agricultural production areas that have larger salinity and drainage problems are mainly located in irrigation districts in the north, where arid and semi-arid climatic conditions prevail. Around 34 million ha (17.9% of the country) present chemical soil degradation (SEMARNAT, 2015). Soil salinization directly affects 3.2% of the country, mainly in the states of Chiapas, Nuevo León, Oaxaca, Sonora, Sinaloa, San Luis Potosí, Veracruz and Zacatecas (SEMARNAT, 2009).

Karmakar et al. (2016) reviewed the potential effects of climate change on soil properties, including the rise of soil salinization and alkalization in areas where evaporation increased or rainfall decreased due to climate change. They recommend monitoring of land degradation keeping in view productivity and economic losses in relation to climate change effects. Freshwater resources will be challenged by the trends of climate change that forecast higher temperatures and lower rainfall and potential increase in water demand driven by population. By changing the chemical quality of water, salinization contributes to losses in biodiversity and soil fertility. Soil salinization as a result of long-term irrigation represents a hazard for the environment and local economies. Hence, water quality assessment is of the utmost importance.

Quality of water indicates suitability of the resource for different uses, because each kind of water use needs certain biological, chemical and physical characteristics. Several water quality indices have been proposed, taking into account: nutrients, pollutants, dissolved ions, physicochemical parameters, physical stream conditions and/or ecological characteristics. According to Gholamreza (2015) these indices can be summarized into five groups:

(1) General water quality index methods, which do not take into account the water usage.

(2) Specific water quality index techniques that define water quality for specific usage as irrigation, industrial, drinking and protection of aquatic life.

(3) Design indices; water quality classification is not taken into account. It is a tool to assess the impact of decisions and plan future measures for water management.

(4) Statistical indices; they use statistical models for water quality classifications being the most objective methods.

(5) Biological indices; they define water quality according to the effects of water on aquatic life.

The most widely used water quality indices to evaluate potential salinity risk of soils are Residual Sodium Carbonate (RSC) and Sodium Adsorption Ratio (SAR) (Smith et al., 2015). In view of the limited number and uncertainty of using only two indices, in the present work a novel water quality assessment was applied for the first time by statistically combining eight individual quality indices for irrigation water in zones susceptible to soil salinization. These are: RSC (Eaton, 1950), SAR (Richards, 1954), percentage of sodium (%Na) (Wilcox, 1955), Kelley index (KI; Kelley, 1963), permeability index (PI; Doneen, 1964), soluble sodium percentage (SSP; Todd and Larry, 2005), magnesium adsorption ratio (MAR; Raghunath, 1987) and recently, cation ratio of structural stability (CROSS) (Smith et al., 2015).

These combined-indices approach is tested in the agricultural region of Tierra Nueva, San Luis Potosí, where recent soil salinization processes are evident from salt precipitates composed of natrite ( $\text{Na}_2\text{CO}_3$ ), making some farming zones unsuitable for agriculture and where visual observations by the authors and reports by farmers indicate that crops do not grow as vigorously as they used ca. 4 years ago. Agriculture is the main economic activity in the Tierra Nueva area and hence the assessment of water quality is of great importance to determine the convenience of its use. The assessment of the hydrogeochemical processes occurring in the watershed is of great importance, to advise a sustainable use of water and soil resources.

## Study site

The Tierra Nueva study area is located between latitudes N21°43.30' and N21°36.20' and between longitudes W100°31.20' and W100°40.00'. Climate is semi-arid with rains in the summer and annual average temperature of 18.6 °C. Average annual rainfall is 444.6 mm, and annual potential evaporation is 1740.92 mm (DOF, 2015).

Tierra Nueva is located in the Santa María volcanic complex, San Luis Potosí, Mexico. The formation of this volcanic complex began with the emission of andesitic lava flows and rhyolitic pyroclastic deposits, which were covered by a package of lavas with compositions ranging from trachyte to high-silica rhyolite, and occasional intercalation at specific sites of andesite-basalt lavas (Figure 1). The volcanic package was affected by a series of NW-SE normal faults forming a domino arrangement of narrow tectonic pits (Tristán-González, 1987).

A dam named “La Muñeca” was built in the early 1970s, to store and exploit water streams of Jofre river. La Muñeca has a capacity of  $31 \times 10^6 \text{ m}^3$  (Figure 1). The dam supplies water to the urban area of Tierra Nueva and 980 ha cropland through an irrigation channel. The dam area is around 2.4 km<sup>2</sup>, the urban area where Tierra Nueva is located has 1.8 km<sup>2</sup> and the cropland occupies 5 km<sup>2</sup>. The approximate length of the water body from the dam to the cropland is 18.6 km. Low rainfall makes water from the dam insufficient to meet the demand of the agricultural sector. Thus, farmers opted to build hand-dug wells to satisfy their needs and exploit groundwater to use it with surface water to irrigate their crops.

Soil types are presented in Figure 2 (Driessen et al., 2001). Leptosol is the most widely distributed soil type in the area, whereas Feozem is located at the main course of Jofre river and its tributaries (where

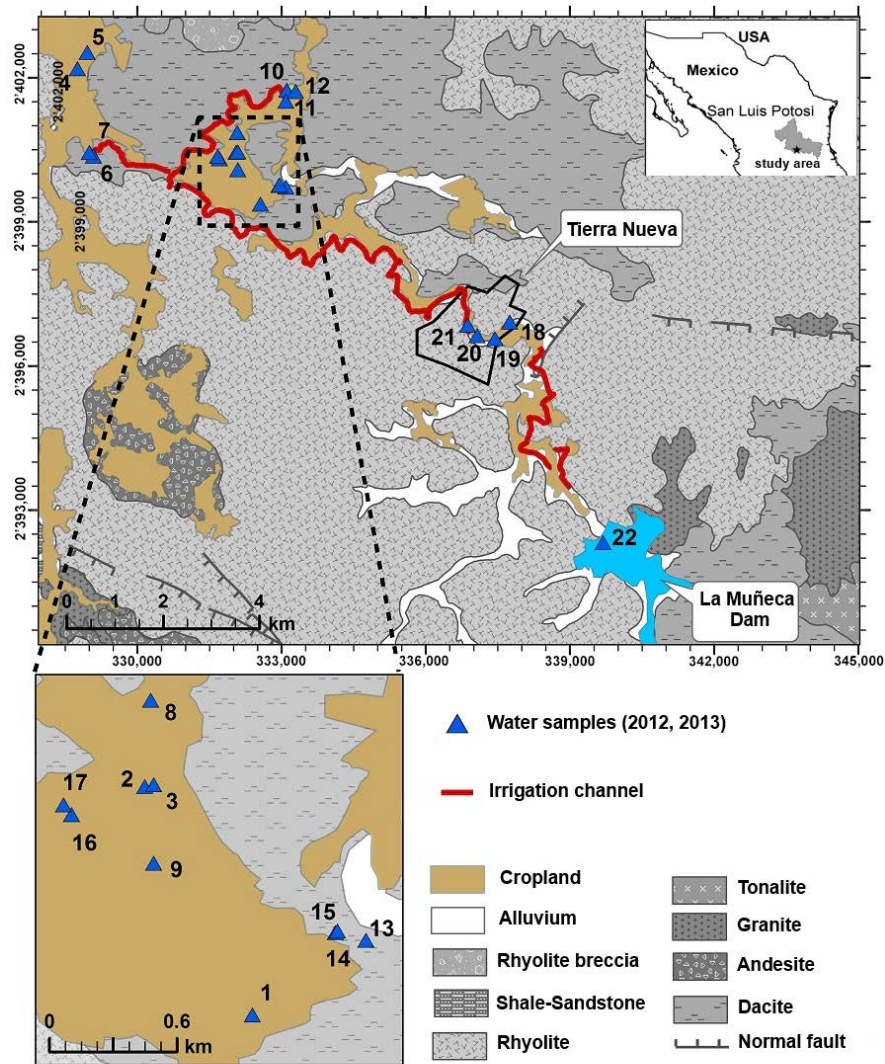


Figure 1. Location of the study area and geologic map of the Tierra Nueva area, including the distribution of water samples.

agriculture is developed), and Regosol is located in the northwestern part of the cropland. Currently, there is a zone where saline layers are observed on soil surface; these places are no more suitable for agriculture. Furthermore, farmers of the locality indicate that in other zones, crops do not grow as they used four years ago, both in quantity and quality.

No study has so far been carried out to explain the causes of recent salinization in this place. Water quality used for irrigation is of great importance in order to determine the convenience of its use in agriculture, which is the main economic activity in the area. Therefore, the assessment of the hydrogeochemical processes occurring in the watershed is of great importance, to advise a sustainable use of water and soil resources.

## MATERIALS AND METHODS

### Water sampling and analysis

The study was conducted during the same season in two consecutive years (2012 and 2013). In September 2012, 21 groundwater samples and one surface water sample from La Muñeca dam were collected. In August 2013, 16 groundwater samples and three surface water samples

were collected. In both cases, standard procedures were used (APHA, 2005). The location of samples is shown in Figure 1 and is classified as cropland (1–17), urban area (18–21), and dam (22–24). Cropland sites 4, 6, 9, 12 and 16 were not sampled during 2013.

In each sampling point, groundwater level, pH, electrical conductivity and temperature were measured *in situ* using a calibrated YSI 556 MPS multiprobe. Alkalinity was determined by titration (alkalinity kit 3811, HI Hanna Instruments). Cations ( $\text{Ca}^{2+}$ ,  $\text{K}^+$ ,  $\text{Mg}^{2+}$ , and  $\text{Na}^+$ ) were analyzed by optical emission spectrometry with inductively coupled plasma at Laboratorio de Geoquímica Ambiental, Universidad Nacional Autónoma de México. Anions ( $\text{Cl}^-$ ,  $\text{F}^-$ ,  $\text{NO}_3^-$  and  $\text{PO}_4^{3-}$ , and  $\text{SO}_4^{2-}$ ) were analyzed by colorimetric methods at Instituto de Investigación Científica y Tecnológica A. C. (IPICYT), using a SMART 2, LaMotte equipment (2012 samples) and at Laboratory of Hydrogeochemistry, CICESE, by ion chromatography (ICS-2000, Dionex), using integration times of 6 minutes and NaOH 4 mM as eluent (2013 samples). Every sample was measured by triplicate and the standard deviation was less than 15% between replicates. Results of physicochemical analysis are shown in Table S1 of the supplemental material.

To evaluate water quality, following indices were calculated using the shown equations and water quality criteria:

1) Sodium percentage (%Na) (Wilcox, 1955).

$$\%Na = \frac{Na^+ + K^+}{Ca^{2+} + Mg^{2+} + Na^+ + K^+} \times 100 \quad (1)$$

Criteria: <20 excellent, 20–40 good, 40–60 permissible, 60–80 doubtful, and >80 unsuitable.

2) Soluble sodium percentage (SSP) (Todd and Larry, 2005).

$$SSP (\%) = \frac{Na^+}{Ca^{2+} + Mg^{2+} + Na^+} \times 100 \quad (2)$$

Criteria: <50 good, >50 bad.

3) Residual sodium carbonate (RSC) (Eaton, 1950).

$$RSC = (CO_3^{2-} + HCO_3^-) - (Ca^{2+} + Mg^{2+}) \quad (3)$$

Criteria: <1.25 good, 1.25–2.5 doubtful, > 2.5 unsuitable.

4) Kelley ratio (KR) (Kelley, 1963).

$$KR = \frac{Na^+}{Ca^{2+} + Mg^{2+}} \quad (4)$$

Criteria: <1 good, >1 bad.

5) Sodium adsorption ratio (SAR), (Richards, 1954).

$$SAR = \frac{Na^+}{\sqrt{\frac{Ca^{2+} + Mg^{2+}}{2}}} \quad (5)$$

Criteria: <10, excellent (S1), 10–18 good (S2), 18–26 doubtful (S3), >26 unsuitable (S4).

6) Cation ratio of structural stability (CROSS) (Smith et al., 2015).

$$CROSS = \frac{Na^+ + 0.335(\pm 0.038)K^+}{\left[ \frac{Ca^{2+} + 0.0758(\pm 0.012)Mg^{2+}}{2} \right]^{0.5}} \quad (6)$$

For this index, no criteria is proposed, however, as the authors mentioned that CROSS could replace calculations of SAR, the same criteria was used: <10 excellent (S1), 10–18 good (S2), 18–26 doubtful (S3), >26 unsuitable (S4).

7) Permeability index (PI) (Doneen, 1964).

$$PI = \frac{(Na^+ + \sqrt{HCO_3^-})}{Ca^{2+} + Mg^{2+} + Na^+} \times 100 \quad (7)$$

Criteria: <20 excellent, 20–40 good, 40–80 injurious, >80 unsatisfactory.

8) Magnesium adsorption ratio (MAR) (Ragunath, 1987).

$$MAR (\%) = \frac{Mg^{2+}}{Ca^{2+} + Mg^{2+}} \times 100 \quad (8)$$

Criteria: <50 suitable, >50 unsuitable.

9) Total dissolved solids (TDS).

$$TDS (\text{mg/L}) = K \times EC \quad (9)$$

where EC is the electrical conductivity ( $\text{dS}\cdot\text{m}^{-1}$ ),  $K = 640$  for most of the cases,  $K = 735$  for mixed waters, and  $K = 800$  for  $EC > 5 \text{ dS}\cdot\text{m}^{-1}$ .

Criteria: <1,000 non saline, 1,000–3,000 slightly saline, 3,000–10,000 moderately saline, and >10,000 very saline.

10) Salinization hazard (based on conductivity) and sodicity hazard (based on SAR)

All indices are based on concentration of dissolved anions and cations, expressed in  $\text{meq}\cdot\text{L}^{-1}$ . Results were classified according to the water quality criterion.

## Statistics

Data for land use, sampling years and water quality indices were analyzed by factorial ANOVA. Variance normality and homogeneity was assumed before performing statistical data analyses. Statistical significance was determined by Tukey posteriori test at  $P < 0.05$ . All statistical analyses were performed using Statistica 7.0, and graphs were generated with SigmaPlot 12.

A principal component analysis (PCA) of groundwater quality indices was performed, and the data were analyzed using standard methods. The graphic software Origin Pro version 9.1. was used to evaluate index correlations and yearly change. The PCA is based on combination of linear variables with maximum variance within data set. This analysis describes vectors that meet a number of observations within a specified dimensional space, and are orthogonal to each other (Ng, 2009). Principal components with high eigenvalues and comprising variables with high factor loading are those that better represent the system features. Hence, the principal components with eigenvalues >1 and factor loading >10% were chosen (Brejda et al., 2000). Pearson's correlation coefficients resulting from principal component analysis were used to determine strength of the relationship between calculated groundwater quality indices (Andrews and Carroll, 2001).

## RESULTS

The water temperature in 2012–2013 ranged between 17.7 and 25 °C, and averaged 20.3 °C. The water table was between 0.3 and 8 m depth below ground level, with an average depth of 2.6 m. The shallower waters (0.3–1.5 m) were located at increasing depth at sites: 16<14<15<8, and <13. The pH ranged between 7 and 10, and averaged 8.5; most of the samples were within the normal range of natural waters of 6–8.5 (Hem, 1970). Sample 14 (pH 8.7–9.6) and 15 (pH 9.2–10) were out of range in both sampling years. These sampling points are near each other and are also close to the area where salt efflorescence was found. The similar pH values suggest a mixture between these waters.

Measured electrical conductivity (EC) was 0.3–3.8  $\text{dS}\cdot\text{m}^{-1}$  (deci-Siemens per meter), and averaged 1  $\text{dS}\cdot\text{m}^{-1}$ . The proportion of cations in order of largest to lowest abundance was:  $Na^+ > Ca^{2+} > K^+ > Mg^{2+}$ ; while that for anions was:  $HCO_3^- > CO_3^{2-} > SO_4^{2-} > Cl^- > NO_3^- > F^- > PO_4^{3-}$ . The correlation coefficient between sodium and EC was 0.98, between bicarbonate and EC was 0.87, and for the other ions the correlation coefficients were lower than 0.5. This is an indicator that the ions that contribute mainly to salinity are sodium and bicarbonate.

Ion concentrations were similar during both sampling years, except for  $Cl^-$  that had a tenfold increase, and nitrate and sulfate which also increased significantly in 2013. The evaluation of the impact of droughts to water quality of a river in Netherland has been studied by Van Vliet and Zwolsman (2008), they found that  $Cl^-$ ,  $F^-$  and  $SO_4^{2-}$  increased their concentrations during droughts. This behavior was associated to their natural conservative characteristics and to the fact that they do not react in surface water. In the case of Tierra Nueva, the dam was reduced to a 15% of its capacity in 2013, leading to the concentration of these elements and transport through the main course

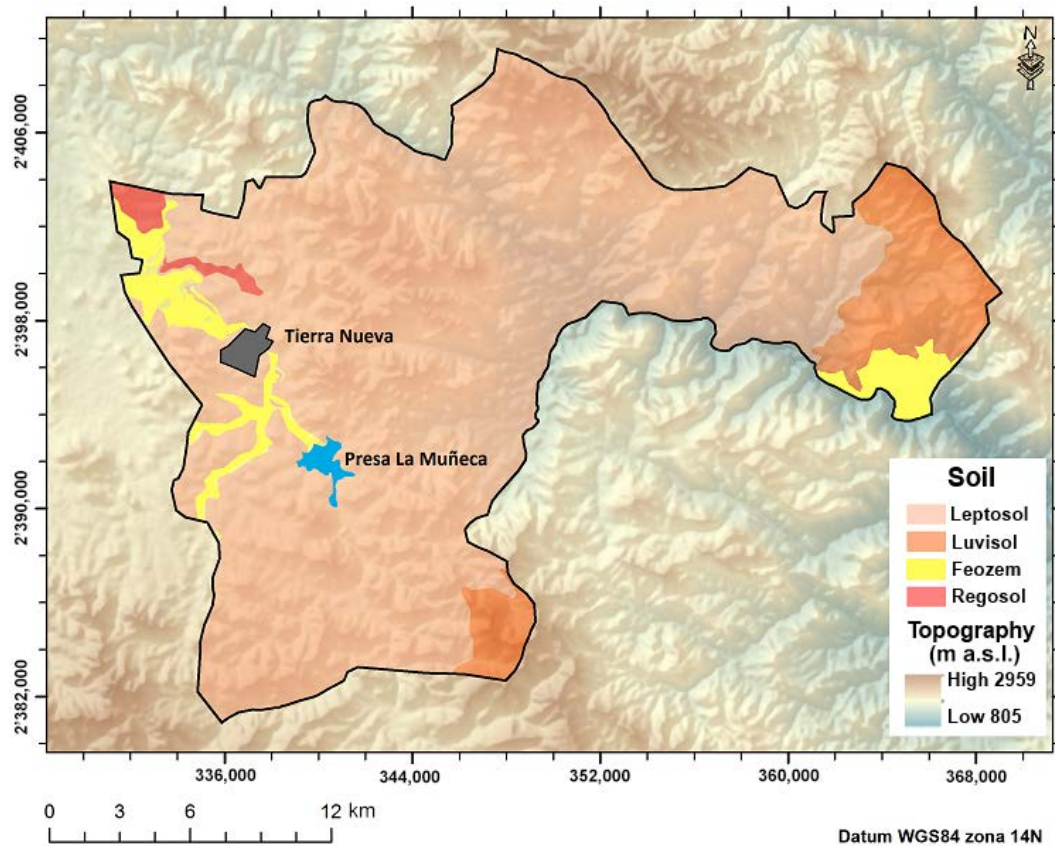


Figure 2. Types of soils present in the municipality of Tierra Nueva, San Luis Potosí, Mexico.

of Jofre river and the groundwater irrigation channels. In the case of nitrates, the increase can be associated to the agricultural activities in the zone and the evaporation rates due to the drought.

According to TDS values, in 2012 94% of water samples from the cropland were non saline and the rest slightly saline, while in 2013, water quality was worse, with 83% non saline and 17% slightly saline samples (Table 1). In the urban area and the dam 100% of water samples were non saline in both years. The spatial distribution of TDS values of both sampling years is shown in Figure 3; there can be observed that the higher TDS concentrations were located in the cropland. In 2012, water samples from the cropland were slightly saline and were located in the southeastern part of the cropland, where Jofre river is close and the shallowest water table was measured (0.3 m). In Figure 3b, that corresponds to the TDS values of 2013, the concentrations in the cropland increased, except for sample 7, which has a direct connection to the dam, indicating water mixture. As shown in Figure 4, variation of TDS values between 2012 and 2013 was larger in the dam, and the highest variation of standard deviation was found in the cropland. For both land uses (dam and cropland), values increased in 2013.

### Water quality indices

#### Sodium percentage (%Na)

In natural waters, %Na is a common parameter that indicates whether the water is suitable for use in agriculture or not. Table 1 summarizes water quality classification of water samples based on the results of calculated indices for the three studied areas (cropland, urban area and dam). As shown in Table 1, based on %Na during 2012, 53% of the water was unsuitable, 6% permissible, and the remaining

51% was of doubtful quality. For 2013 water quality was lower, with 58% unsuitable and 42% of doubtful quality for irrigation. In the urban area, %Na indicates that 50% of the water was permissible and 50% of doubtful quality during both sampling campaigns. Finally, the only sample from the dam analyzed in 2012 exhibited %Na within the permissible range for irrigation, whereas in 2013, 25% of the samples showed permissible levels of %Na and the rest were categorized as unsuitable for irrigation. These results show that, according to the high amount of dissolved sodium, this water cannot be recommended for use in irrigation, since it will promote soil salinization.

The variation of the %Na water quality index is shown in Figure 5. It can be observed that the largest variation of %Na occurred in the dam water, which also present the highest level of dispersion (variation of the standard deviation), with an increase during 2013.

#### Soluble sodium percentage (SSP)

According to SSP, 100% of water from cropland was bad for irrigation during both years. In the urban area, 75% of the water was of good quality during 2012, while in 2013, 75% of the samples showed poor quality and the remaining 25 % exhibited good quality. These results are in agreement with %Na calculations, including the major variation for the dam, with increasing values in 2013 (Figure 6).

#### Magnesium adsorption ratio (MAR)

The magnesium content is considered one of the most important indicators to assess water quality for irrigation. At high concentrations of magnesium, crops are harmfully affected as soil becomes more saline (Rengasamy, 2006). Harmful effects on soils are expected when water MAR values are larger than 50 (Ayers and Wescot, 1985). As can be

Table 1. Water quality classification of samples collected in 2012 and 2013 in the Tierra Nueva area, San Luis Potosí, Mexico, based on different quality indices. Where CL – cropland, UA- urban area, D- dam, and dimless-dimensionless.

Water quality index	Range	Water class	Percentage of samples					
			CL		UA		D	
			2012	2013	2012	2013	2012	2013
Percentage of Na (Na%)	< 20	Excellent						
	20–40	Good						
	40–60	Permissible	6		50	50	100	25
	60–80	Doubtful	41	42	50	50		
	> 80	Unsuitable	53	58				75
Soluble sodium percentage, SSP (%)	< 50	Good			75	100	100	25
	> 50	Bad	100	100	25			75
Residual sodium carbonate, RSC (meqL <sup>-1</sup> )	< 1.25	Good						25
	1.25–2.5	Doubtful	6		75	50	100	
	> 2.5	Unsuitable	94	100	25	50		75
Kelley ratio, KR (dimless)	< 1	Good			25	25	100	25
	> 1	Unsuitable	100	100	75	75		75
Sodium adsorption ratio, SAR (dimless)	< 10	Excellent (S1)	70	58	100	100	100	100
	10–18	Good (S2)	18	25				
	18–26	Doubtful (S3)	6					
	> 26	Unsuitable (S4)	6	17				
Cation ratio of structural stability, CROSS (dimless)	< 10	Excellent (S1)	65	50	100	100	100	100
	10–18	Good (S2)	6	17				
	18–26	Doubtful (S3)	17	8				
	> 26	Unsuitable (S4)	12	25				
Total dissolved solids, TDS (mgL <sup>-1</sup> )	< 1,000	Non saline	94	83	100	100	100	100
	1,000–3,000	Slightly saline	6	17				
	3,000–10,000	Moderately saline						
	> 10,000	Very saline						
Permeability index, PI (%)	< 20	Excellent						
	20–40	Good						
	40–80	Injurious						
	> 80	Unsatisfactory	100	100	100	100	100	100
Magnesium adsorption ratio, MAR (%)	< 50	Suitable	94	100	100	100	100	100
	> 50	Unsuitable	6					

seen in Table 1, MAR values in the cropland during 2012 indicate 94% of the water was suitable for irrigation and 6% was not. On the other hand, for 2013, 100% was suitable for irrigation. In the urban area and the dam, 100% of water samples were suitable for irrigation. In Figure 7, this water quality index shows variation between year 2012 and 2013. As for %Na and SSP, major variation is also in the dam, with values increasing in 2013.

#### Permeability index (PI)

The permeability index proposed by Doneen (1964) indicates susceptibility of soil to permeability loss with respect to water quality, taking into account dissolved ions that can easily precipitate (expressed in percentage). Soil permeability is affected by a long-term use of irrigation water, depending on soil type and quality of the water used for irrigation. This index is calculated based on Na<sup>+</sup>, Ca<sup>2+</sup>, Mg<sup>2+</sup> and bicarbonate content of water. Values of PI for the cropland, urban area and dam are unsatisfactory for 100% of the samples (Table 1), in other words, water should not be used for irrigation according to this index. Figure 8, shows the PI variation between year 2012 and 2013. Again, the major variation is observed in the dam, but in contrast with %Na, SSP and MAR, there is a reduction in values for 2013.

#### Kelley ratio (KR)

This ratio is based on the premise that as the concentration of Na increases, Na<sup>+</sup> tends to replace Ca<sup>2+</sup>. Continued irrigation and rain

leach out the replaced Ca<sup>2+</sup> with the resulting dispersion of the soil, where Ca<sup>2+</sup> plays a significant role in the mineral nutrition of plants. Likewise, the uptake of K<sup>+</sup> is stimulated, while the absorption of Na<sup>+</sup> is repressed, by Ca<sup>2+</sup>, even when the concentration of Ca<sup>2+</sup> is very low (Kelley, 1963). According to KR, all samples from the cropland were unsuitable in both years of sampling (Table 1). In the urban area, 75% of water samples are unsuitable for irrigation and 25% were of good quality in both years. Water from the dam was of good quality in 2012, and in 2013, 25% of water was of good quality and 75% was unsuitable for irrigation. In Figure 9, variation in the KR values between year 2012 and 2013 are evident, with the highest variation in the cropland, with an increment of values in year 2013.

#### Sodium adsorption ratio (SAR)

In 1954, Richards proposed this ratio as an indicator of adsorption of sodium by soil and soil structure damage. A higher proportion of Na<sup>+</sup> related to Ca<sup>2+</sup> and Mg<sup>2+</sup> affects the suitability of water for crops. This ratio is used to calculate the degree to which cations dissolved in irrigation water tend to enter into cation exchange sites in soil. The main problem with high sodium concentrations, as mentioned before, is its effect on soil permeability. Sodium also contributes directly to total salinity of water and may be toxic to sensitive crops. As can be observed in Table 1, unlike the other indices, SAR values indicate that in the cropland 70% of water was of excellent quality and 6% was unsuitable for irrigation during 2012. In year 2013, 58% was of excel-

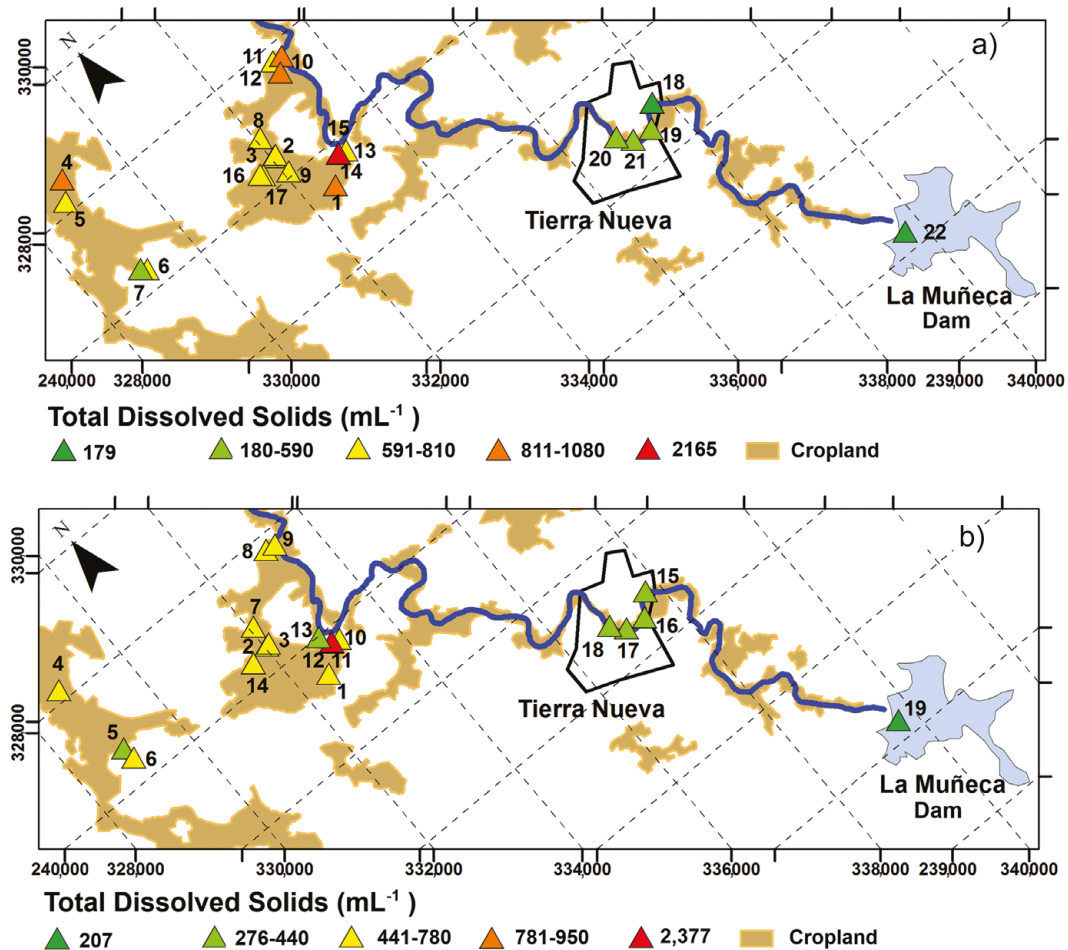


Figure 3. Spatial variation of total dissolved solids (TDS) values in Tierra Nueva, San Luis Potosí, Mexico.

lent quality and 17% unsuitable for irrigation. In the urban area and the dam, 100% of water samples were of excellent quality. Figure 10, shows the variation of SAR between 2012 and 2013. Here, the highest variation was in the cropland, with an increase in year 2013.

#### Cation ratio of structural stability (CROSS)

This index takes into account not only  $\text{Na}^+$ ,  $\text{Ca}^{2+}$  and  $\text{Mg}^{2+}$ , but also  $\text{K}^+$  (Smith *et al.*, 2015). Authors suggest using CROSS (optimized) as water quality index instead of SAR, on the basis that hydraulic conductivity of  $\text{K}^+$ -modified soils is overestimated by SAR and that problems with soil physical properties caused by waters with high concentrations of  $\text{K}^+$  have been reported since more than 50 years (Reeve *et al.*, 1954).

In Table 1, CROSS values evaluated with SAR criteria indicate that in the cropland 65% of water was of excellent quality and 12% was unsuitable for irrigation in 2012. In 2013, 50% was of excellent quality and 25% unsuitable for irrigation. In the urban area and the dam, 100% of water samples were of excellent quality. Results are very similar to those based on SAR, but opposite to the obtained with other indices. In Figure 11, CROSS shows variation between 2012 and 2013. As with SAR, the highest variation was in the cropland, with an increase in 2013.

#### Residual sodium carbonate (RSC)

Residual sodium carbonate is defined as the residue of carbonate that is combined with sodium, when  $\text{Ca}^{2+}$  and  $\text{Mg}^{2+}$  precipitated, caused by evaporation and plant uptake. This may happen when water has

more carbonate and bicarbonate than  $\text{Ca}^{2+}$  and  $\text{Mg}^{2+}$ . The presence of carbonate and bicarbonate in irrigation water represents a loss of fertility risk, owing to deposition of sodium carbonate. Water with high RSC has high pH and higher potential of sodium hazard (Eaton, 1950). Values of RCS for the cropland in 2012 indicate that 94% of the water is unsuitable for irrigation and 6% is of doubtful quality (Table 1). For 2013, 100% of the water in the cropland was unsuitable for irrigation. In the urban area, during 2012, 25% of water was unsuitable for irrigation and the rest was of doubtful quality; whereas in 2013, 50% was unsuitable for irrigation, and the remaining 50% was of doubtful quality. During 2012, dam water was of doubtful quality, and during 2013, 25% of the water was of good quality and 75% was unsuitable for irrigation. In Figure 12, water quality index shows variation between 2012 and 2013. Major variation was also in the cropland, with an increase in 2013; however, variation is less than for SAR and CROSS.

#### Salinization hazard (based on EC) and sodicity hazard (based on SAR)

The Salinity Laboratory of United States proposed a classification for irrigation water quality based on electrical conductivity (EC) of water and sodium adsorption risk (SAR) (Richards, 1954). This can be evaluated when these parameters are plotted on a diagram, in which EC represents salinity hazard and SAR sodicity hazard; the interpretation is based on the work of Dhok *et al.* (2011).

Observing the diagram (Figure 13), samples from the urban area,

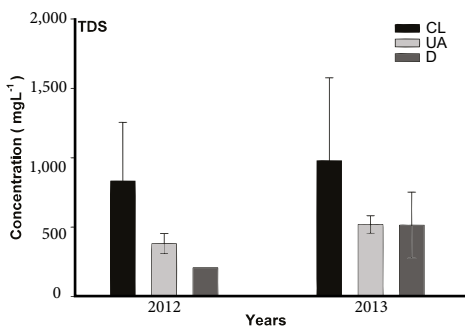


Figure 4. Graph of TDS (total dissolved solids) in mgL<sup>-1</sup> for 2012 and 2013 samples, according to the land use. Where CL – cropland, UA – urban area and D – dam. The bars are standard deviations obtained by factorial ANOVA (P = 0.95541).

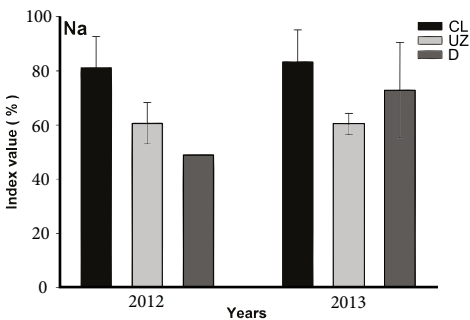


Figure 5. Graph of %Na for 2012 and 2013 samples, according to land use. Where CL – cropland, UZ – urban zone, and D – dam. The bars represent the standard deviation obtained by factorial ANOVA (P = 0.29313).

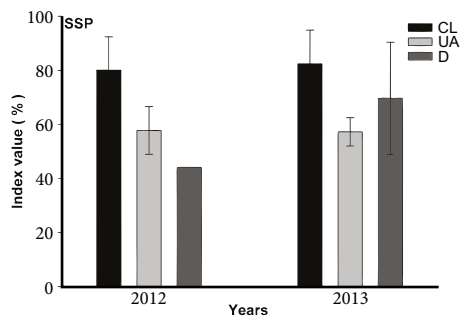


Figure 6. Graph of SSP (soluble sodium percent) for 2012 and 2013 samples, according to the land use. Where CL – cropland, UA – urban area and D – dam. The bars represent the standard deviation obtained by factorial ANOVA (P = 0.27464).

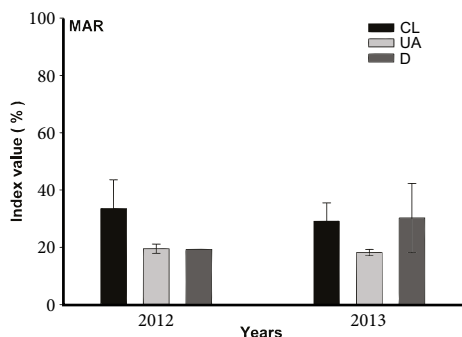


Figure 7. Graph of MAR (magnesium adsorption ratio) in percentage for 2012 and 2013 samples, according to the land use. Where CL – cropland, UZ – urban zone and D – dam. The bars represent the standard deviation obtained by factorial ANOVA (P = 0.30702).

the dam and sample 7 from the cropland represent medium salinization hazard (C2) and low sodium hazard (S1). It is important to mention, that sample number 7 from the cropland is mixed with water from the dam through a cement channel that distributes dam water to the cropland; therefore, this sample shows a quality similar to that of dam water. Type C2 represents an average salinity water that can normally be used whenever there is a moderate degree of washing. It can be used to irrigate crops that are moderately tolerant to salts without any danger of salinization. Class S1 can be used for irrigation in most soils with little chance of reaching dangerous levels of exchangeable sodium.

Nine samples from the cropland signal high salinization hazard (C3) and low sodium hazard (S1). Water type C3, cannot be used in soils with poor drainage. Even with proper drainage they may need special practices for salinity control, as selection of salt tolerant plants.

From the cropland, samples 11, 13 and 6 indicate high salinization (C3) and sodium hazard (S2). Class S2 in fine textured soils with high capacity for ion exchange, sodium represents a significant hazard. These waters can be used in coarse textured soils or organic soils with good permeability.

Sample 15 denotes very high salinization (C4) and sodium hazard (S4). Water of the C4 type is inappropriate for irrigation under ordinary conditions, but may be used under very special circumstances. Soil must be permeable with proper drainage and excess of water should always be used to achieve a good washing. Salt tolerant crops must be selected, although class S4 is generally unsuitable for irrigation purposes.

In general, salinization hazard is of medium level for samples from the dam and urban areas. For the cropland, however, a high salinization hazard and tendency of increment in sodium hazard along the Jofre river and western site of the cropland are identified. Sample 15 poses very high salinization and sodium hazard. It is in this place that salt efflorescence and soil salinization were located.

**Statistics**

*Factorial variance analysis*

Data for water quality indices and TDS were used to perform a factorial variance analysis expressed in graphs presented in Figures 4 to 12. In each graph, P value is noted. Values of P < 0.05 indicate that data present a significant variation. This is the case of PI (Figure 8), P was equal to 0.00004; Tukey posteriori test revealed significant differences in data for dam samples. However, the bars representing the standard deviation are smaller than in graphs of other water quality indices such as %Na (Figure 5), SSP (Figure 6) and RSC (Figure 12).

On the other hand, indices that present high variability on standard deviation in the cropland data were: KR (Figure 9), SAR (Figure 10), CROSS (Figure 11), RSC (Figure 12) and TDS (Figure 4). In all these cases, P values higher than 0.05, considered to indicate no significant variations. With this variance analysis, higher values can be identified according to land use and sampling year. Three behaviors were observed:

- 1) Values of the cropland were higher than in other locations, and in 2012 those values suffered an increment. This was the case of MAR (Figure 7)
- 2) Values of the dam were higher than in other locations, and in 2012 those values suffered an increment. This was the case of PI (Figure 8)
- 3) Values of the cropland were higher than in other locations, and in 2013 those values suffered an increment. This was the case of %Na (Figure 5), SSP (Figure 6), KR (Figure 9), SAR (Figure 10), CROSS (Figure 11), RSC (Figure 12), TDS (Figure 4).



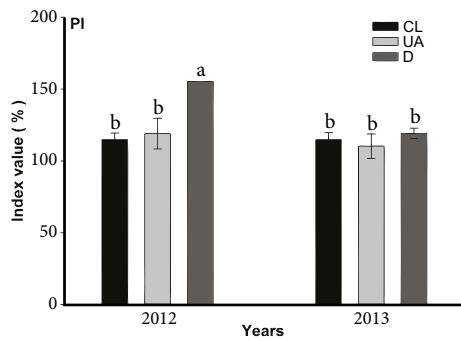


Figure 8. Graph of PI (permeability index) in percentage for 2012 and 2013 samples, according to the land use. Where CL – cropland, UZ – urban zone and D – dam. The bars represent the standard deviation, and values with different letters indicate significant differences obtained by factorial ANOVA ( $P = 0.00004$  and Tukey a posteriori test).

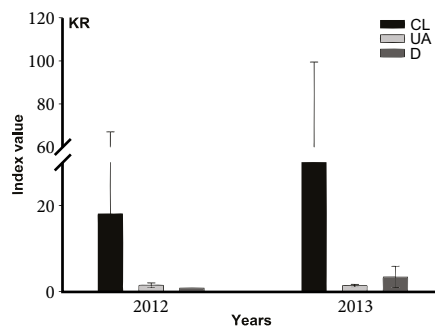


Figure 9. Graph of KR (Kelley ratio), dimensionless, for 2012 and 2013 samples, according to the land use. Where CL – cropland, UZ – urban zone and D – dam. The bars represent the standard deviation obtained by factorial ANOVA ( $P = 0.95083$ ).

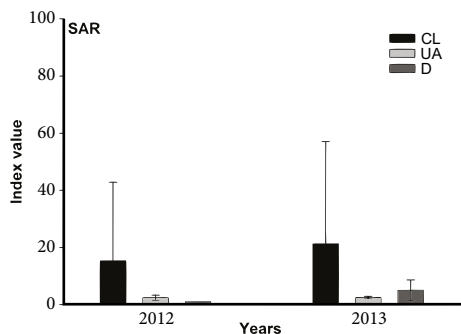


Figure 10. Graph of SAR (sodium adsorption ratio) dimensionless for 2012 and 2013 samples, according to the land use. Where CL – cropland, UZ – urban zone and D – dam. The bars represent the standard deviation obtained by factorial ANOVA ( $P = 0.96551$ ).

These results were expected, since soil salinization has been detected in the cropland. As mentioned before, in 2013 a severe drought caused a decrease in the dam water level down to 15% of its total capacity. This caused an increase in the concentration of dissolved ions; therefore, it is not surprising that the indices were higher in that year.

What was unexpected is the fact that MAR and PI water quality indices presented lower values in 2013 in the cropland and in the dam, respectively. These are indicators mainly related to magnesium concentrations and to the susceptibility of permeability loss of the soil, which are probably independent of the drought.

It is also important to point out that in the case of PI (Figure 8),

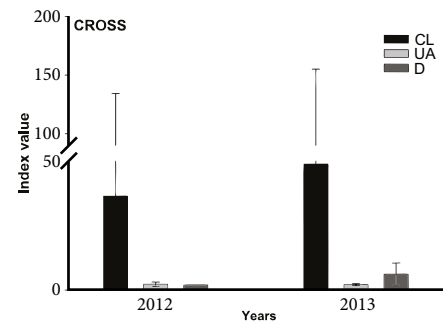


Figure 11. Graph of CROSS (cation ratio of structural stability) dimensionless for 2012 and 2013 samples, according to the land use. Where CL – cropland, UZ – urban zone and D – dam. The bars represent the standard deviation obtained by factorial ANOVA ( $P = 0.98347$ ).

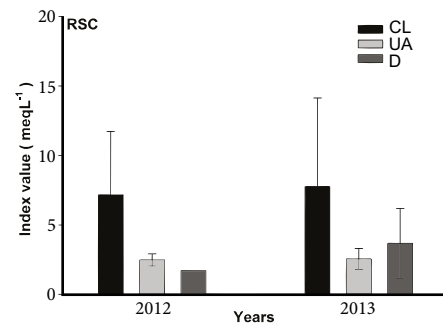


Figure 12. Graph of RSC (residual sodium carbonate) in meqL<sup>-1</sup> for 2012 and 2013 samples, according to the land use. Where CL – cropland, UZ – urban zone and D – dam. The bars represent the standard deviation obtained by factorial ANOVA ( $P = 0.95811$ ).

values for the urban zone were higher than values for the cropland in 2012. This was the only case where the water quality index of the urban area was higher than the values of the cropland. It could be associated to additional anthropogenic impact.

#### Principal component analysis

This analysis was made for all samples (cropland, urban and dam) and the results are shown in Figure 14a and 14b, the eigenvectors of variables from the principal component analysis are shown. The two principal components represent the behavior of 85.5% of the 2012 data and 85.9% of the 2013 data.

In the graph for 2012, PI is not positively related to any of the other indices; however, there is a negative correlation with %Na, SSP and MAR. Also, factorial variance analysis revealed that the PI presented significant variability. The CROSS index, which is recommended instead of SAR (Smith *et al.*, 2015), shows a closest similarity to KR, although all three indices appear to have a strong correlation. A similar case is observed for RSC and TDS, which are also correlated but with a stronger contribution from principal component 1. Another important factor is the separation between the group of KR, CROSS, SAR, TDS and RSC, and the group of %Na, SSP and MAR, although both are influenced by the principal component 1, the first group is influenced positively by the principal component 2 and the second group is influenced negatively.

A similar behavior was expected for 2013, as concentrations of most cations did not present significant variations. However, principal component analysis (PCA) revealed that the PI and the MAR indices

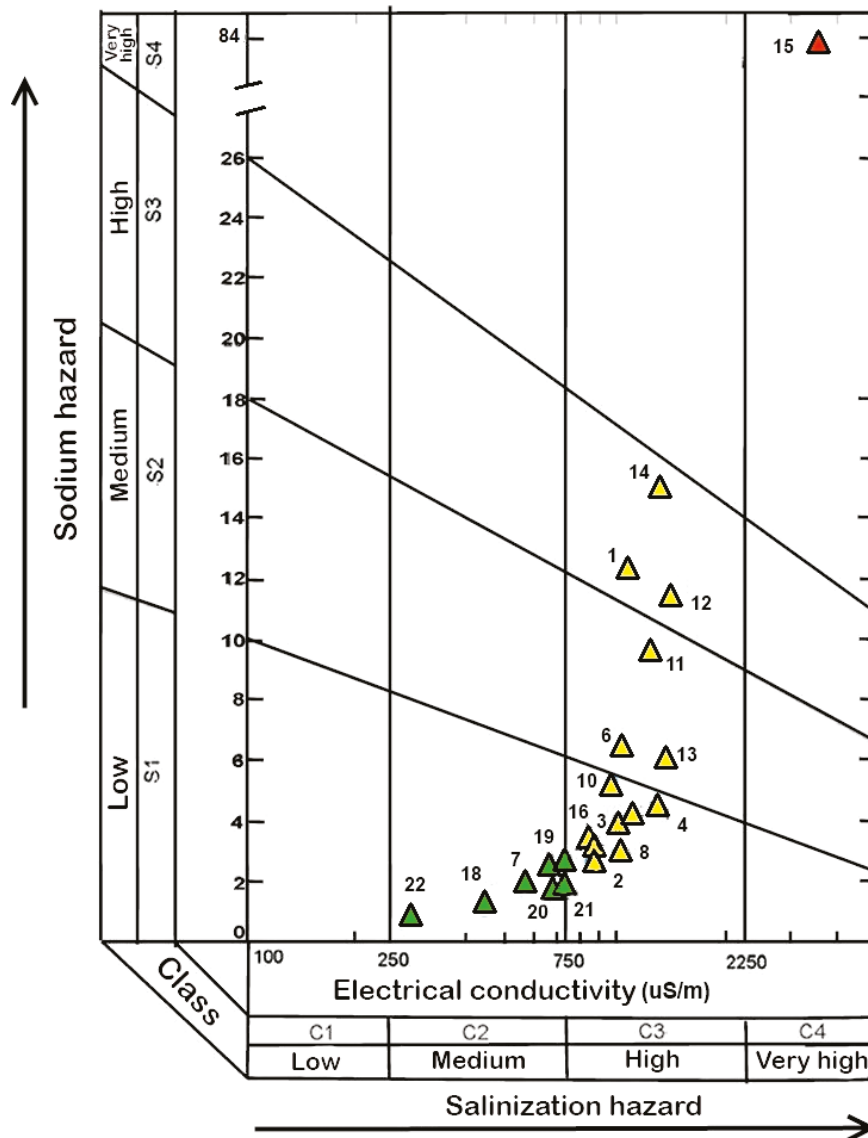


Figure 13. Classification of irrigation water based on the electrical conductivity and the sodium adsorption ratio.

are positively and closely related. The difference between years 2012 and 2013 can be attributed to the variability of both water quality indices in year 2012, caused by the nature of the waters at the sampling time. For the case of SSP and %Na, these are positively controlled by the principal component 1 and 2. However, the group of RSC, TDS, SAR, CROSS and KR are positively influenced by the principal component 1 and negatively by the principal component 2.

Analysis indicates that SAR is not related to PI; also, SAR revealed an excellent quality of water for irrigation, while PI revealed an unsuitable water quality. In contrast, in 2013, PI is closely related to MAR, which suggests that Mg played an important role in the risk of soil permeability decrease in this area. Nevertheless, according to MAR, irrigation water was suitable during this year and unsuitable according to PI.

**Soil salinization**

Piper diagrams were used to assess salinization process due to irrigation water quality. In Figure 15 one can observe that samples are grouped into three types of water: calcium-bicarbonate, calcium-

sodium-bicarbonate, and sodium-bicarbonate. Water samples collected in the second campaign (2013) had more chlorine than those collected in 2012, which is an indicator of evaporation under normal conditions (Singh *et al.*, 2015). In Piper diagrams, the blue symbols correspond to the dam, the green to the urban area, the black to the cropland; the red symbol represents the composition of sample 15, collected in the area with salt efflorescence on soil. This shows that samples of the dam are of the calcium-bicarbonate type and waters from the cropland are of the mainly sodium-bicarbonate type, passing through the urban area as calcium-sodium-bicarbonate waters. The evolution of waters from Ca-HCO<sub>3</sub><sup>-</sup> to Na-HCO<sub>3</sub><sup>-</sup> types suggests a possible cationic exchange of Ca<sup>2+</sup> for Na<sup>+</sup>. Sample 15 has the highest water salinity and worst quality, as shown by the all water quality indices (Figure 13 and Table S2 of the supplemental material).

To recognize the natural controlling processes of water chemistry, the Gibbs diagram is used, which consists in the comparison between TDS and the ratio of Na<sup>+</sup>/(Ca<sup>2+</sup>+Na<sup>+</sup>). It gives valuable information about the main natural factors that alter water chemistry such as, rainfall, weathering and evaporation. In Figure 16, the Gibbs diagram

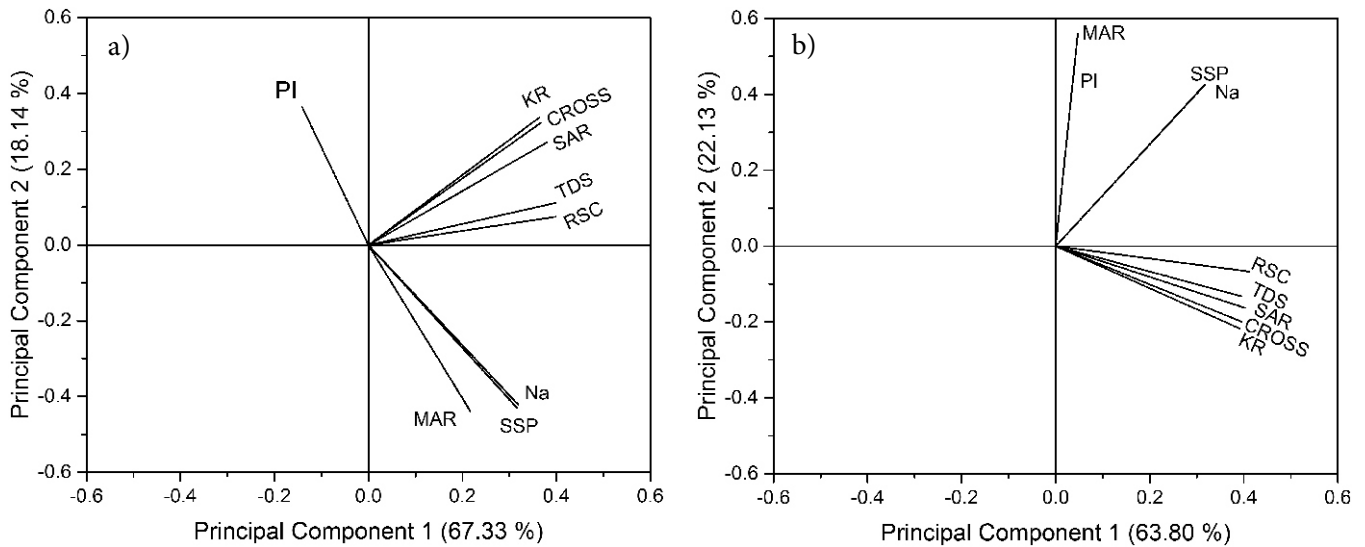


Figure 14. Principal component analyses of the eight quality indices for irrigation water. (a) Data from year 2012; (b) Data from year 2013.

shows that the predominant chemical process is water-rock interaction, with all samples, inclusive sample 15, in the rock domain. Evaporation, indicated by the positive trend, promoted an increase in dissolved ion concentrations and eventually soil salinization.

**DISCUSSION**

**Water quality**

Natural environmental topographies, groundwater level and groundwater salinity have been considered as key factors of soil salinization. When groundwater level is less than 2.5 m, development of saline soils might be driven by groundwater depth and TDS. Such is the case of soil salinization in the Yellow River Delta, China, where

shallow groundwater zones present the highest TDS concentrations. The rise in TDS concentrations was related to seawater intrusion and tidal variations (Fan *et al.*, 2012). Another example is Nestos River Delta in Greece, that presents a soil salinization problem due to long-term irrigation with saline groundwater (Gkioungkis *et al.*, 2015).

There are also reports of soil salinization problems associated with water table rise in areas that are not located close to the ocean. This is the case of regions bounded by the rivers Krishna, Warana and Yerala in India. Where the shallow groundwater table extends from 1 to 10 m, and the wells with the lowest water table (less than 3 m) presented high electrical conductivities (2–5  $\text{dS}\cdot\text{m}^{-1}$ ), an indicator that these areas are acting as sinks in salt transport mechanism (Patil and Nagarajan, 2015). Other example is in Delta and Lower Senegal River Valley from Mauritania and Senegal, where shallow saline groundwater

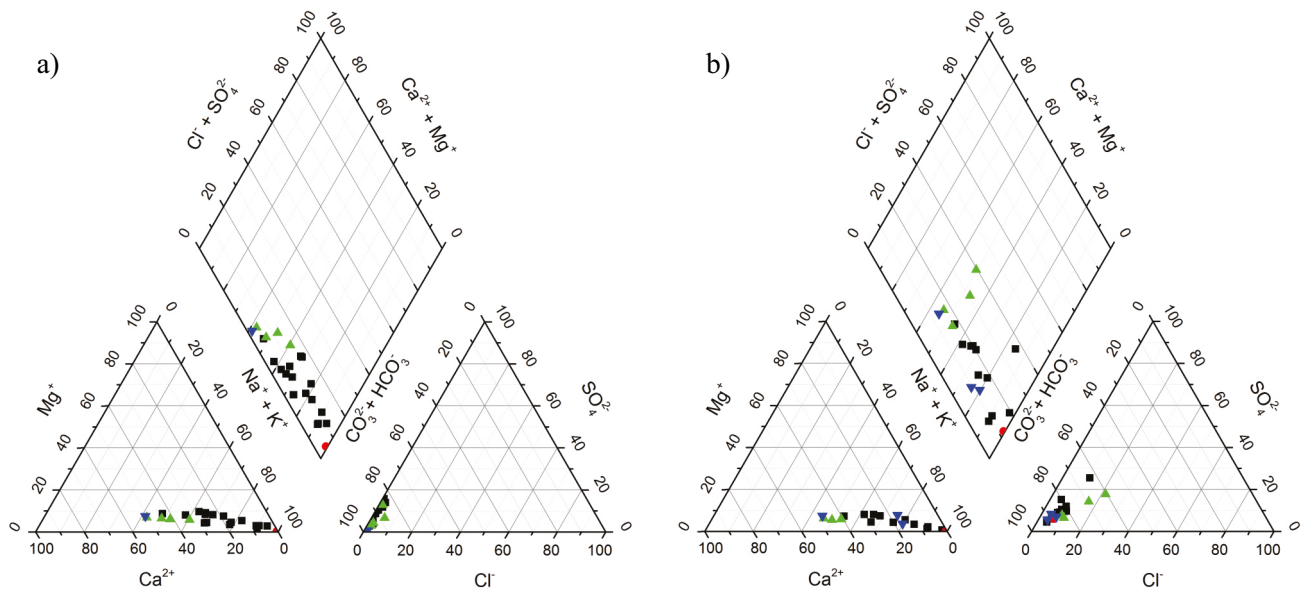


Figure 15. Piper diagrams of water samples from the Tierra Nueva area. a) sampling year 2012, b) sampling year 2013. Black squares represent cropland samples, green triangles urban area samples, and blue triangles dam samples. The red dot represents the composition of cropland sample 15, collected in the area with salt efflorescence on soil.

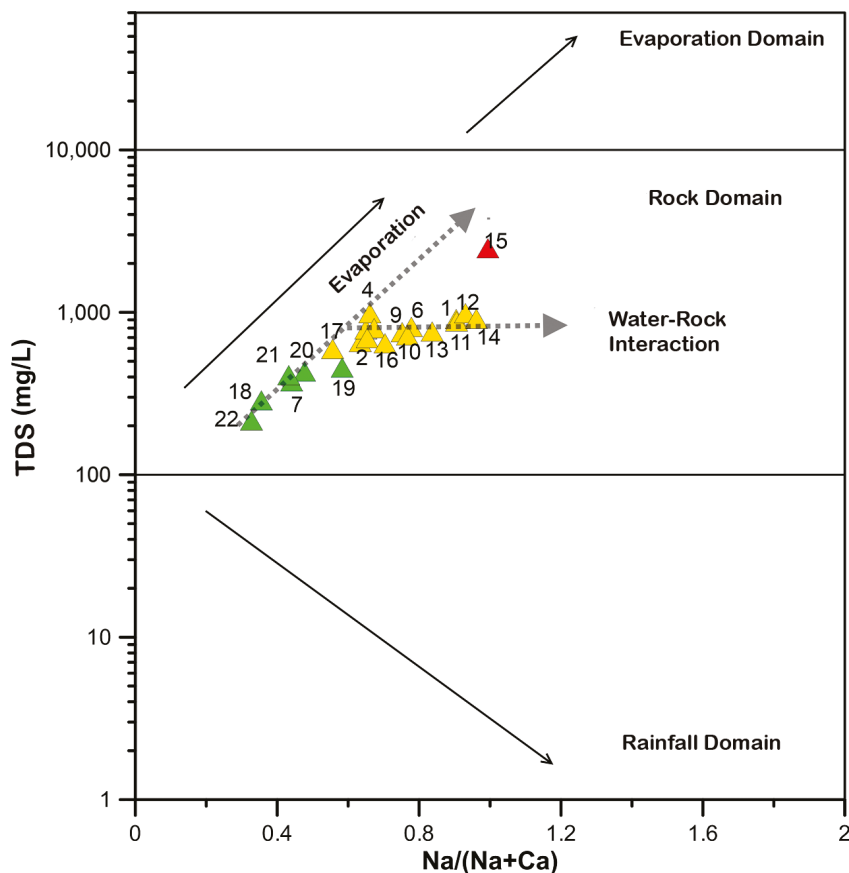


Figure 16. Gibbs diagram of water samples from the Tierra Nueva area. Colors represent the different processes of a group of samples, where green is evaporation, and yellow is water-rock interaction. The red symbol corresponds to the sample collected in the area with salt efflorescence on soil. Sample numbers are indicated close to the symbols.

and inappropriate management of irrigation water has caused a large salinization damage to soil (Moctar *et al.*, 2015). The Aral Sea basin, which is considered as the fourth largest fresh-water lake in the world, experienced a rapid drying out due to many years of mismanagement of land and water resources. In year 2007, Ibrakhimov *et al.* performed a detailed analysis of the relationship between groundwater table and salinity in this region, where groundwater levels were between 0.57 and 1.48 m depth and suggested that elevated groundwater levels forced soil salinization, adding annually between 3.5 to 14  $\text{ton}\cdot\text{ha}^{-1}$  of salts to the soils, depending of level and salinity of the water table. Of course this is an extreme case; however, the mismanagement of natural resources can lead to such cases.

In the Tierra Nueva area we found shallow groundwater levels (less than 1.6 m) in sampling points 8, 13, 14, 15 and 16 (Figure 1). Sampling points 13, 14 and 15 are close to each other in the southeastern part of the cropland, while sampling points 8 and 16 are located on the northwestern part (Figure 1). For 2012 and 2013, respectively, sampling site 14 had TDS values of 874 and 1,208  $\text{mg}\cdot\text{L}^{-1}$ , and sampling site 15 of 2,376 and 2,813  $\text{mg}\cdot\text{L}^{-1}$ . Thus, sample 15 is classified as brackish water in both sampling years and sample 14 only in sampling year 2013, according to the water classification by Fan *et al.* (2012). The remained water samples are classified as freshwaters. This suggests that in sampling points 8 and 16, soil salinization processes are not associated to water table rise.

Electrical conductivity measured in the water samples ranges from 0.3 to 3.8  $\text{dS}\cdot\text{m}^{-1}$ . In cases where no immediate actions can be undertaken to mitigate soil salinization process due to irrigation, an alterna-

tive is to cultivate a salt tolerant crops (Singh, 2015; Ahmad and Prasad, 2013). For example, crops such as quinoa can develop under extreme conditions of salinization from shallow groundwater with EC up to 40  $\text{dS}\cdot\text{m}^{-1}$  (Talebnejad and Sepaskhah, 2015). Maize is more sensible with reductions by 25% of crop yield with EC up to 0.81  $\text{dS}\cdot\text{m}^{-1}$  (Suresh and Nagesh, 2015). At seedling stage, sorghum had a 50% lower crop yield at EC up to 11  $\text{dS}\cdot\text{m}^{-1}$  (Saadat and Homaei, 2015) while cotton has a tolerance limit of EC up to 7.7  $\text{dS}\cdot\text{m}^{-1}$  (Palomo-Rodríguez *et al.*, 2013). Salinity tolerance of crops commonly cultivated in Mexico according to EC values can be consulted in Cortés-Jiménez *et al.* (2009).

To decide if groundwater is suitable for irrigation on the basis of water quality indices, one can either calculate the global water quality index (WQI) by Kannel *et al.* (2007), where all indices are summarized, or use the method by Kumari *et al.* (2013) who suggest that if one of the indices indicates a doubtful or bad water quality, this water should be considered unsuitable for irrigation (even if the rest of the calculated indices indicates good water quality). By applying the criteria of Kumari *et al.* (2013), all samples from the cropland studied here are unsuitable for irrigation purposes, and 75% of the samples from the urban area and the dam samples are unsuitable for irrigation.

The negative correlation between PI and %Na, SSP and MAR for 2012 was unexpected, since these indices have a direct impact on soil permeability (Aghazadeh and Mogaddam, 2010; Obiefuna and Sheriff, 2011; Gowd, 2005). Irrigation water with high Na% reduces crop growth and reacts with soil, reducing its permeability (Joshi *et al.*, 2009). However, taking into account that adsorption of Na by clay minerals and soils increases at higher Mg:Ca ratios; when MAR values

are higher than 4, more  $\text{Na}^+$  is adsorbed since the bonding energy of  $\text{Mg}^{2+}$  is less than that of  $\text{Ca}^{2+}$  (Michael, 2009). In this study, the lowest value of MAR in 2012 was 18 and in 2013 was 17, allowing more sodium to be adsorbed. It has also been demonstrated that salinity risk can be assessed with the calculation of SAR, which represents the degree of water alkalization and the decrement of soil permeability (Moctar *et al.*, 2015). However, in our study, SAR was not correlated with PI.

In this study, the evaluation of eight water quality indices is proposed, since the methodologies to assess water quality for irrigation are not well defined. In some reports, those indices are calculated for one or more sampling periods, normally complemented by physico-chemical parameters such as T, pH, EC and TDS, among others. The most widely used water quality indices are RSC and SAR, sometimes complemented with other water quality indices such as PI (Kumari *et al.*, 2013), or with PI, %Na (Patil and Nagarajan, 2015) or with PI, KR, MAR, SSP and total hardness (Docheshmeh and Vadiati, 2014). In other cases the results are statistically analyzed, mainly by hierarchical cluster analysis (Zhang *et al.*, 2012; Docheshmeh and Vadiati, 2014), correlation analysis (Kumar *et al.*, 2007) and variance (Kirankumar and Karunashree, 2015). The results will also depend on the specific site characteristics, which makes for a more difficult standardization of assessment methods and comparisons.

In Mexico, the Instituto Nacional de Investigaciones Forestales, Agrícolas y Pecuarias (INIFAP), investigated the correlation between water quality indicators for water irrigation usage (Cortés-Jimenez *et al.*, 2009). They reported correlations of 164 water analyses for the following indicators: SAR and adjusted SAR, RSC, effective and potential salinity, PI, exchangeable Na percent, and %Na. They conclude that EC and SAR are the more suitable criteria, enough and simple to evaluate irrigation water quality (Cortés-Jimenez *et al.*, 2009). However, in order to understand the processes leading to soil salinization and propose strategies of mitigation, a detailed assessment has to be performed, including more than three water quality indices and soil analyses.

### Soil salinization

Samples from the dam are calcium-bicarbonate and the water from the cropland is mainly sodium-bicarbonate, passing through the urban area as calcium-sodium-bicarbonate water. This behavior suggests a possible cationic exchange between  $\text{Ca}^{2+}$  and  $\text{Na}^+$ , documented before by Cates *et al.* (1996). This implies that  $\text{Na}^+$  dissolves from the geologic media while sorption of  $\text{Ca}^{2+}$  by the geologic media occurs.

Schoeller (1965) proposed the Base Exchange Index (CAI, chloro-alkaline index) to interpret ionic exchange between groundwater and geologic media, which is calculated as:  $\text{CAI} = [\text{Cl}(\text{Na}^+ + \text{K}^+)] / \text{Cl}^-$  with concentrations expressed in  $\text{meqL}^{-1}$ . Positive CAI values indicate exchange of  $\text{Na}^+$  and  $\text{K}^+$  from water with  $\text{Ca}^{2+}$  and  $\text{Mg}^{2+}$  from rocks and negative values indicate exchange of  $\text{Ca}^{2+}$  and  $\text{Mg}^{2+}$  from water with  $\text{Na}^+$  and  $\text{K}^+$  from rocks, as it has been shown elsewhere (Nagaraju *et al.*, 2006). For water samples in this study the CAI is negative in all cases, with values ranging between -5 to -126, confirming what is observed in the Piper diagrams. Water from the dam, which originally is of the calcium-carbonate type, evolves to the type sodium-bicarbonate, increasing the sodification hazard for the soil (Richards, 1954).

### Other factors affecting water quality and promoting soil salinization

The population growth rate in San Luis Potosí state in the last 15 years (2000–2015) is of 28,000 person/year. This has caused an increase in clean water demand from  $5.2 \text{ m}^3\cdot\text{s}^{-1}$  (1995) to  $6.2 \text{ m}^3\cdot\text{s}^{-1}$  (2013) (INEGI, 2015). The population of Tierra Nueva depended on groundwater supply from the Santa María del Río aquifer, which

has an annual media availability of  $-13 \times 10^6 \text{ m}^3$ , with annual recharge of  $3.7 \times 10^6 \text{ m}^3\cdot\text{y}^{-1}$  and availability index of  $-3.5 \times 10^6 \text{ m}^3$ , which means that the recharge is not enough to supply the demand of this region (CONAGUA, 2015). To balance this water demand, La Muñeca Dam was constructed. However, rainfall scarcity is promoting chemical changes in water quality, as shown in this work, accelerating soil salinization processes due to irrigation.

Thirteen municipalities located in the southeastern part of the San Luis Potosí state are catalogued as high vulnerable to climate change. According to the report of Centro de Ciencias de la Atmósfera de la UNAM (Fernández-Eguiarte *et al.*, 2015), Tierra Nueva has medium climatic exposition, low climatic sensitivity to climate change, high adaptive capacity to climate change, and low vulnerability to climate change. These is good for the region in terms of exposition to this phenomena, however, long-term monitoring should be addressed in this zone. The authors consider that the results presented in this paper can be taken into account to include the Santa María del Río aquifer in the Comisión Nacional del Agua national inventory of aquifers with marine intrusions or under phenomena of soil salinization and saline groundwater (CONAGUA, 2013).

## CONCLUSIONS

The evaluation of the water quality using two or three quality indices is not enough and to elucidate the processes leading to soil salinization and propose strategies for mitigation a more detailed assessment is required, including soil analyses.

According to the evaluated water quality indices for the Tierra Nueva area, San Luis Potosí, water from the cropland is unsuitable for irrigation purposes. In the urban area and in the dam 75% of the respective samples are unsuitable for irrigation. The main index taken into account to conclude this was Permeability index (PI).

Water from the dam “La Muñeca” is classified as calcium-bicarbonate type, which changed to sodium-calcium-bicarbonate type when it flowed through the urban area, and evolved to sodium-bicarbonate type in the cropland. This increased the sodification hazard for soil. The predominant chemical processes are water-rock interaction and evaporation, which promoted an increase in the concentration of dissolved ions and eventually soil salinization.

Shallow groundwaters in the southeastern part of the cropland are classified as brackish according to their total dissolved solids values and as C4S4 (high) according to their salinization and sodium hazard. This is the probable cause for precipitation of natrite ( $\text{Na}_2\text{CO}_3$ ) in the topsoil.

## ACKNOWLEDGEMENTS

Authors would like to thank to Consejo Nacional de Ciencia y Tecnología (CONACYT) for the scholarship given to the student from the Programa de Posgrado en Ciencias de la Tierra con orientación en Geociencias Ambientales at CICESE. Authors are also grateful to the colleagues and referees for their comments to improve this manuscript.

## SUPPLEMENTARY MATERIAL

Supplementary Table S1. “Results of the physicochemical analysis of the water samples” and Table S2. “Water quality indices for water samples” can be found at the journal web site <<http://rmcg.unam.mx/>>, in the table of contents of this issue.

## REFERENCES

- Aghazadeh, N., Mogaddam, A.A., 2010, Assessment of groundwater quality and its suitability for drinking and agricultural uses in the Oshnavieh area, northwest of Iran: *Journal of Environmental Protection*, 1(01), 30-40.
- Ahmad, P., Prasad, A.M.N.V., 2013, *Salt Stress in Plants. Signalling, Omics and Adaptations*: New York, Heidelberg, Dordrecht, London, Springer, 509 pp.
- Andrews, S.S., Carroll, C.R., 2001, Designing a soil quality assessment tool for sustainable agroecosystem management: *Ecological Applications*, 11(6), 1573-1585.
- APHA (American Public Health Association), 2005, *Standard methods for the examination of water and wastewater: 19th edition*: Washington, American Journal of Public Health, 1183 pp.
- Ayers, R.S., Wescot, D.W., 1985, *Water quality for agriculture*: Rome, Food and Agriculture Organization of the United Nations, 174 pp.
- Brejda, J.J., Moorman, T.B., Karlen, D.L., Dao, T.H., 2000, Identification of regional soil quality factors and indicators: I. Central and southern high plains: *Soil Science Society of America Journal*, 64(6), 2115-2124.
- Cates, D.A., Knox, R.C., Sabatini, D.A., 1996, The impact of ion exchange processes on subsurface brine transport as observed on piper diagrams: *Groundwater* 34(3), 532-544.
- CONAGUA (Comisión Nacional del Agua), 2013, Situación de los recursos hídricos, Capítulo II, *en Estadísticas del agua en México*, Gobierno de la República, 35-36.
- CONAGUA (Comisión Nacional del Agua), 2015, Actualización de la disponibilidad media anual de agua en el acuífero Santa María del Río (2417), Estado de San Luis Potosí: *Diario Oficial de la Federación*. 20 de abril de 2015, 11 pp.
- Cortés-Jiménez J.M., Troyo-Diéguez E., Garatuzza-Payán J., 2009, Correlación entre indicadores de la calidad del agua para uso agrícola: Instituto Nacional de Investigaciones Forestales, Agrícolas y Pecuarias, Folleto técnico 66, 36 pp.
- DOF (Diario Oficial de la Federación), 2015, Acuerdo por el que se da a conocer el resultado de los estudios técnicos de aguas nacionales subterráneas del Acuífero Santa María del Río, Clave 2417, en el Estado de San Luis Potosí, Región Hidrológico-Administrativa Golfo Norte: Comisión Nacional del Agua, 8 pp.
- Dhok, R.P., Patil, A.S., Ghole, V.S., 2011, Sodicity and salinity hazards in water flow processes in the soil: *Electronic Journal of Chemistry*, 8(2), S474-S480.
- Docheshmeh, G.A., Vadiati, M., 2014, Determination of groundwater quality based on important irrigation indices using analytical hierarchy process method: *Agricultural Advances*, 3(6), 176-185.
- Doneen, L.D., 1964, *Notes on Water Quality in Agriculture published as a Water Science and Engineering Paper 4001*: Department of Water Science And Engineering, University of California, Davis, 48 pp.
- Driessen, P., Deckers, J., Nachtergaele, F., 2001, *Lecture notes on the major soils of the world*: World Soil Resources Reports, 307 pp.
- Eaton, F.M., 1950, Significance of carbonates in irrigation waters: *Soil Science*, 39, 123-133.
- Fan, X., Pedroli, B., Liu, G., Liu, Q., Liu, H., Shu, L., 2012, Soil salinity development in the Yellow River Delta in relation to groundwater dynamics: *Land Degradation and Development*, 23(2), 175-189.
- Fernández-Eguiarte A.R., Zavala-Hidalgo J., Romero-Centeno R., Conde-Álvarez A.C., Trejo-Vázquez, R.I., 2015, Actualización de los escenarios de cambio climático para estudios de impactos, vulnerabilidad y adaptación (en línea): Universidad Nacional Autónoma de México, Unidad de Informática para Ciencias Atmosféricas y Ambientales y Secretaría del Medio Ambiente y Recursos Naturales, Instituto Nacional de Ecología y Cambio Climático, <<http://atlasclimatico.unam.mx/AECC/servmapas/>>, acceso libre, consulta: 15 de agosto 2016.
- Gholamreza, A., 2015, *Water quality management assessment and interpretation*: New York, Heidelberg, Dordrecht, London, Springer, 118 pp.
- Gkioukigis, I., Kallioras, A., Pliakas, F., Pechtelidis, A., Diamantis, V., Diamantis, I., Ziogas, A., Dafnis, I., 2015, Assessment of soil salinization at the eastern Nestos River Delta, N.E. Greece: *Catena*, 128, 238-251.
- Gowd, S.S., 2005, Assessment of groundwater quality for drinking and irrigation purposes: a case study of Peddavanka watershed, Anantapur District, Andhra Pradesh, India: *Environmental Geology*, 48(6), 702-712.
- Hem, J.D., 1970, *Study and interpretation of the chemical characteristics of natural water*: United States Geological Survey, Water-Supply Paper 2254, 263 pp.
- Ibrakhimov, M., Khamzina, A., Forkutsa, I., 2007, Groundwater table and salinity : Spatial and temporal distribution and influence on soil salinization in Khorezm region (Uzbekistan, Aral Sea Basin): *Irrigation and Drainage Systems*, 21(3), 219-236.
- INEGI (Instituto Nacional de Estadística y Geografía), 2015, *Anuario estadístico y geográfico por entidad federativa*: Instituto Nacional de Estadística y Geografía, 726 pp.
- Joshi, D. M., Kumar, A., Agrawal, N., 2009, Assessment of the irrigation water quality of river Ganga in Haridwar District Rasayan: *Jornal of Chemistry*, 2(2), 285-292.
- Kannel, P.R., Lee, S., Lee, Y.S., Kanel, S.R., Khan, S.P., 2007, Application of water quality indices and dissolved oxygen as indicators for river water classification and urban impact assessment: *Environmental Monitoring and Assessment*, 132(1-3), 93-110.
- Karmakar R., Das I., Dutta D., Rakshit A., 2016, Potential effects of climate change on soil properties: A review: *Science International*, 4, 51-73.
- Kelley, W., 1963, Use of saline irrigation water. *Soil Science*, 95(4), 385-391.
- Kirankumar, C., Karunashree, E., 2015, Micronutrient cation status of paddy and sugarcane growing areas of west Godavari district, Andhra Pradesh: *International Journal of Tropical Agriculture*, 33(3), 1121-1126.
- Kumar, M., Kumari, K., Ramanathan, A. L., Saxena, R., 2007, A comparative evaluation of groundwater suitability for irrigation and drinking purposes in two intensively cultivated districts of Punjab, India: *Environmental Geology*, 53(3), 553-574.
- Kumari, M.K.N., Pathmarajah, S., Dayawansa, N.D.K., 2013, Characterization of agro-well water in Malwathu Oya Cascade-I in Anuradhapura district of Sri Lanka: *Tropical Agricultural Research*, 25(1), 46-55.
- Michael, A.M., 2009, *Irrigation: Theory and Practice*, 2nd edition: New Delhi, India, Vikas Publishing House, 768 pp.
- Moctar, D., Ibrahim, M., Seyni, S., Diakher, M.H., Serigne, F. 2015, Assessing of the suitability for irrigation water and their repercussions on land degradation process in Delta and Lower Senegal River Valley: *American Journal of Water Resources*, 3(2), 32-43.
- Montanarella, L., Pennock, D. J., McKenzie, N., Badraoui, M., Chude, V., Baptista, I., Mamo, T., Yemefack, M., Aulakh, M.K., Yagi, K., Hong, S.K., Vijarnsorn, P., Zhang G.-L., Arrouays, D., Black, Helaina, Krasilnikov, P., Sobocká, J., Alegre, J., Henriquez, C.R., Mendonça-Santos, M.L., Taboada, M., Espinosa-Victoria, D., AlShankiti, A., AlaviPanah, S.K., Elsheikh, E.A.M., Hempel, J., Camps Arbestain, M., Nachtergaele, F., Vargas, R., 2016, World's soils are under threat: *Soil*, 2, 79-82.
- Nagaraju, A., Suresh, S., Killham, K., Hudson-Edwards K., 2006, Hydrogeochemistry of waters of Mangampeta barite mining area, Cuddapah Basin, Andhra Pradesh, India: *Turkish Journal of Engineering and Environmental Sciences*, 30, 203-219.
- Ng, A., 2009, Principal components analysis: Stanford Machine Learning, Lecture notes 1-6, <<http://cs229.stanford.edu/materials.html>>, consulta: 5 de septiembre 2016.
- Obiefuna, G.I., Sheriff, A., 2011, Assessment of shallow ground water quality of Pindiga Gombe area, Yola area, NE, Nigeria for irrigation and domestic purposes: *Research Journal of Environmental and Earth Sciences*, 3(2), 131-141.
- Palomo-Rodríguez, M., Rivera-González, M., Martínez-Rodríguez, G., Faz-Contreras, R., Espinoza-Arellano, J.D.J., 2013, Uso de aguas salinas y frecuencias de aplicación asociado a la salinización de suelos: *Agrofaz*, 13(3), 119-124.
- Patil, S.K., Nagarajan, R., 2015, Geospatial assessment of irrigation water: *Agriculture and Forestry*, 61(2), 189-199.
- Qadir, M., Quillérrou, E., Nangia, V., Murtaza, G., Singh, M., Thomas, R.J., Drechsel, P., Noble, A.D., 2014, Economics of salt-induced land degradation and restoration: *Natural Resources Forum*, 38, 282-295.
- Raghunath, I.I.M., 1987, *Groundwater*. Second edition: New Delhi, India, Wiley Eastern, 344-369.
- Reeve, R.C., Bower, C.A., Brooks, R.H., Gschwend, F.B., 1954, A comparison of the effects of exchangeable sodium and potassium upon the physical condition of soils: *Soil Science Society Proceedings*, 18, 130-132.
- Rengasamy, P., 2006, World salinization with emphasis on Australia: *Journal of*

- Experimental Botany, 57(5), 1017-1023.
- Richards, L.A. (ed.), 1954, Diagnosis and improvement of saline and alkali soils, in *Agricultural Handbook 60*: Washington D.C., United States Department of Agriculture, 160 pp.
- Saadat, S., Homae, M., 2015, Modeling sorghum response to irrigation water salinity at early growth stage: *Agricultural Water Management*, 152, 119-124.
- Schoeller, H., 1965, Qualitative evaluation of groundwater resources, in *Methods and techniques of groundwater investigation and development*: United Nations Educational, Scientific and Cultural Organization, Water Resources Series, 33, 44-52.
- SEMARNAT (Secretaría del Medio Ambiente y Recursos Naturales), 2009, El medio ambiente en México: México, D. F. Dirección General de Estadística e Información Ambiental de la Secretaría del Medio Ambiente y Recursos Naturales, 53 pp.
- SEMARNAT (Secretaría del Medio Ambiente y Recursos Naturales), 2015, Suelos, bases para su manejo y conservación: Naucalpan de Juárez, México, Cuadernos de Divulgación Ambiental, 39 pp.
- Shahid, S.A., 2013, Developments in soil salinity assessment and reclamation. Innovative thinking and use of marginal soil and water resources in irrigated agriculture: New York, Heidelberg, Dordrecht, London, Dubai, Springer, 805 pp.
- Singh, A., 2015, Poor quality water utilization for agricultural production: An environmental perspective: *Land Use Policy*, 43, 259-262.
- Singh, S.P., Tripathi, S.K., Kumar, V., Kumar, A., Raha, P., 2015, Hydrochemical investigation and groundwater quality evolution for irrigation purpose in some blocks of Varanasi District, Uttar Pradesh, India: *International Journal of Tropical Agriculture*, 3(2), 1653-1660.
- Smith, C.J., Oster, J.D., Sposito, G., 2015, Potassium and magnesium in irrigation water quality assessment: *Agricultural Water Management*, 157, 59-64.
- Suresh, K.R., Nagesh M.A., 2015, Experimental studies on effect of water and soil quality on crop yield: *Aquatic Procedia*, 4, 1235-1242.
- Talebnejad, R., Sepaskhah, R., 2015, Effect of different saline groundwater depths and irrigation water salinities on yield and water use of quinoa in lysimeter, *Agricultural Water Management*, 148, 177-188.
- Thomas, D.S.G., Middleton, N.J., 1993, Salinization, new perspectives on a major desertification issue: *Journal of Arid Environments*, 24, 95-105.
- Todd, D.K., Larry, W.M., 2005, *Groundwater hydrology*: New Jersey, John Wiley & Son, Inc, 3<sup>rd</sup> edition, 656 pp.
- Tristán-González, M., 1987, Cartografía geológica "Hoja Tierra Nueva", S.L.P. escala 1:50000: San Luis Potosí, Universidad Autónoma de San Luis Potosí, Instituto de Geología, Folleto Técnico 109, 103 pp.
- Van Vliet, M.T.H., Zwolsman, J.J.G., 2008, Impact of summer droughts on the water quality of the Meuse river: *Journal of Hydrology*, 353(1), 1-17.
- Wilcox, L.V., 1955, *Classification and use of irrigation waters*: Washington D.C., United States Department of Agriculture, 19 pp.
- Zhang, B., Song, X., Zhang, Y., Han, D., Tang, C., Yu, Y., Ma, Y., 2012, Hydrochemical characteristics and water quality assessment of surface water and groundwater in Songnen plain, Northeast China: *Water Research*, 46(8), 2737-2748.

Manuscript received: January 25, 2016

Corrected manuscript received: May 3, 2016

Manuscript accepted: Junio 19, 2016